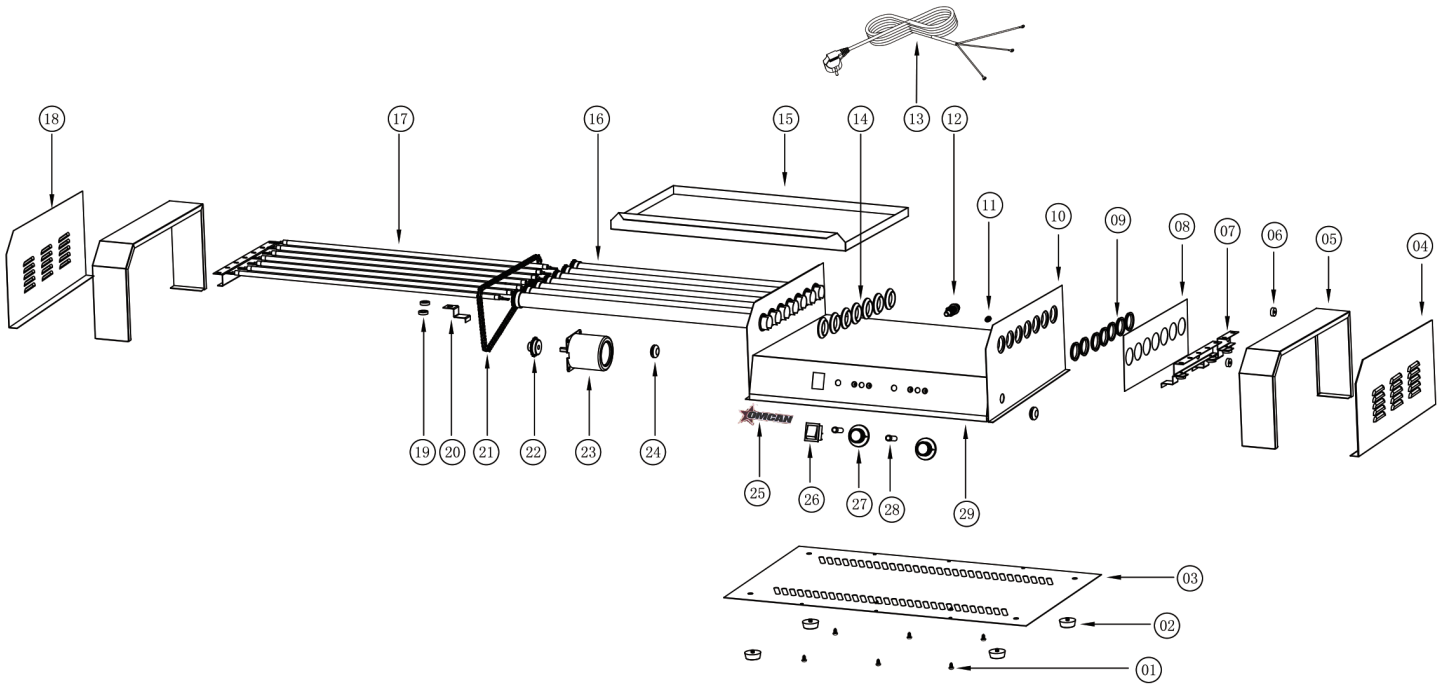


Parts Breakdown

Model CE-CN-0007-N 44691



Parts Breakdown

Model CE-CN-0007-N 44691

| Item No. | Description | Position | Item No. | Description | Position | Item No. | Description | Position |
|----------|--|----------|----------|-----------------------------|----------|----------|--|----------|
| AD313 | Tapping Screw for 44691 | 1 | AD323 | Ground Wire Screw for 44691 | 11 | AD351 | Roller Chain for 44691 | 21 |
| AD314 | Rubber Foot for 44691 | 2 | AD324 | Fuse for 44691 | 12 | AD334 | Wheel Gear for 44691 | 22 |
| AD342 | Bottom Plate for 44691 | 3 | AD347 | Power Plug for 44691 | 13 | AD335 | Motor for 44691 | 23 |
| AD343 | Right Side Plate for 44691 | 4 | AD326 | Rubber Gasket for 44691 | 14 | AD336 | Gasket for 44691 | 24 |
| AD344 | Left and Right Frame for 44691 | 5 | AD348 | Oil Tray for 44691 | 15 | AD337 | Logo for 44691 | 25 |
| AD318 | Silicone Pad for 44691 | 6 | AD328 | Roller for 44691 | 16 | AD338 | Switch for 44691 | 26 |
| AD319 | Roller Heating Element Fixed Plate for 44691 | 7 | AD349 | Heating Pipe for 44691 | 17 | AD339 | Temperature Controller with Knob for 44691 | 27 |
| AD345 | Left and Right Fixed Plate for 44691 | 8 | AD350 | Left Side Plate for 44691 | 18 | AD340 | Indicator Light for 44691 | 28 |
| AD321 | Roller Sleeve for 44691 | 9 | AD331 | Insulated Gasket for 44691 | 19 | AD341 | Decal Sticker for 44691 | 29 |
| AD346 | Right Inside Plate for 44691 | 10 | AD332 | Insulation Pad for 44691 | 20 | | | |